



Arroyo Colorado WPP Implementation Update

Lucas Gregory

Associate Director - Texas Water Resources Institute

Texas A&M AgriLife

July 22, 2025



"This work is funded by Clean Water Act Section 319(h) nonpoint source grants from the U.S. Environmental Protection Agency, administered by the Texas State Soil and Water Conservation Board and the Texas Commission on Environmental Quality."

Watershed Coordinator Update

- New Coordinator starting Monday, July 28th
 - Ms. Samantha Colunga
 - Will formally announce in upcoming newsletter
- Primarily tasked with continued WPP Implementation
- Supports water related research across the Valley

Active Arroyo WPP Implementation Projects

Ag Education & Outreach Implementation

- Landowner Education & Outreach to Increase Program Participation
- Support and Facilitation of WPP Implementation

WPP Implementation – OSSF Inventory, NPS Education & Coastal Stormwater BMP/LID Installation

- OSSF Geodatabase and Inventory Update
- Rio Hondo ISD Coastal Stormwater BMPs Enhancement
- Support and Facilitation of WPP Implementation

Education & Outreach Activities

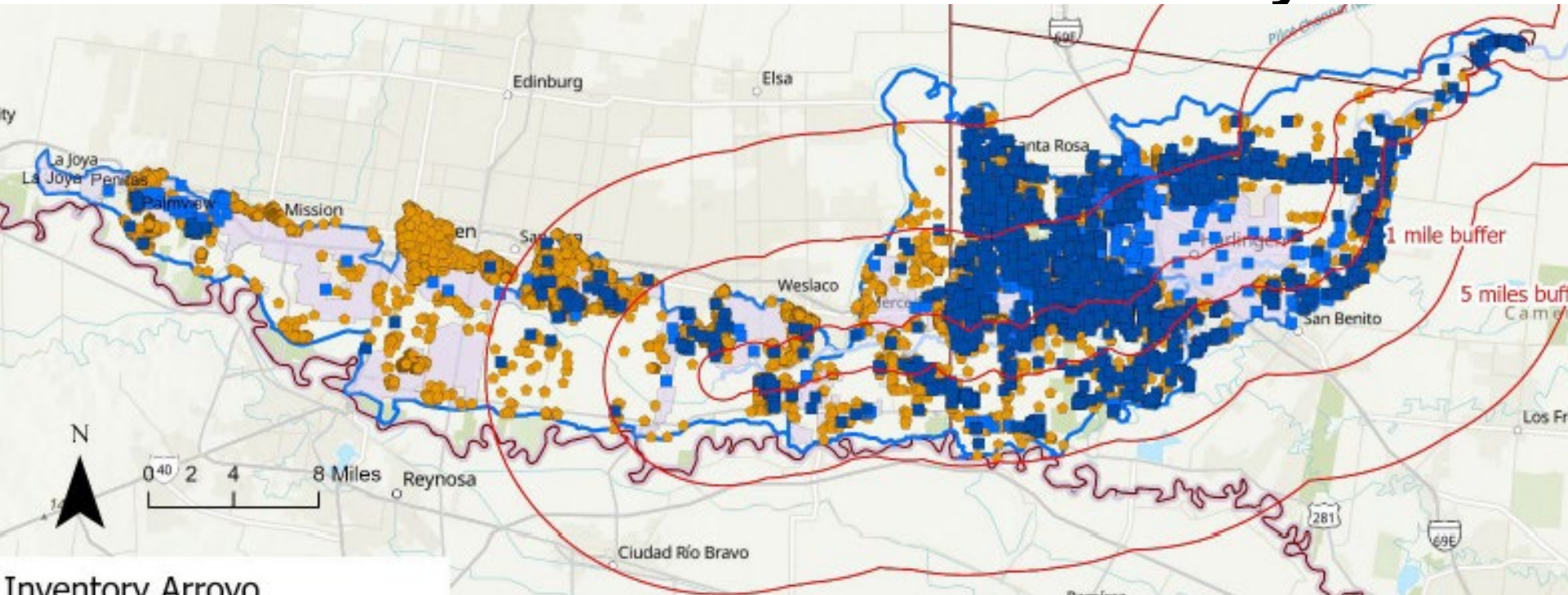
Recent

- Conducted Texas Watershed Stewards event in January
- Hosted Arroyo Colorado Watershed Partnership meeting in May
- Hosted Texas Stream Team training with Rio Hondo Middle School teachers and students in May

In the Works

- Developing educational signage and resources for Rio Hondo ISD rain garden/native habitat
- Working with Resaca de la Palma State Park to provide Arroyo focused educational resources for student programs

OSSF Database and Inventory



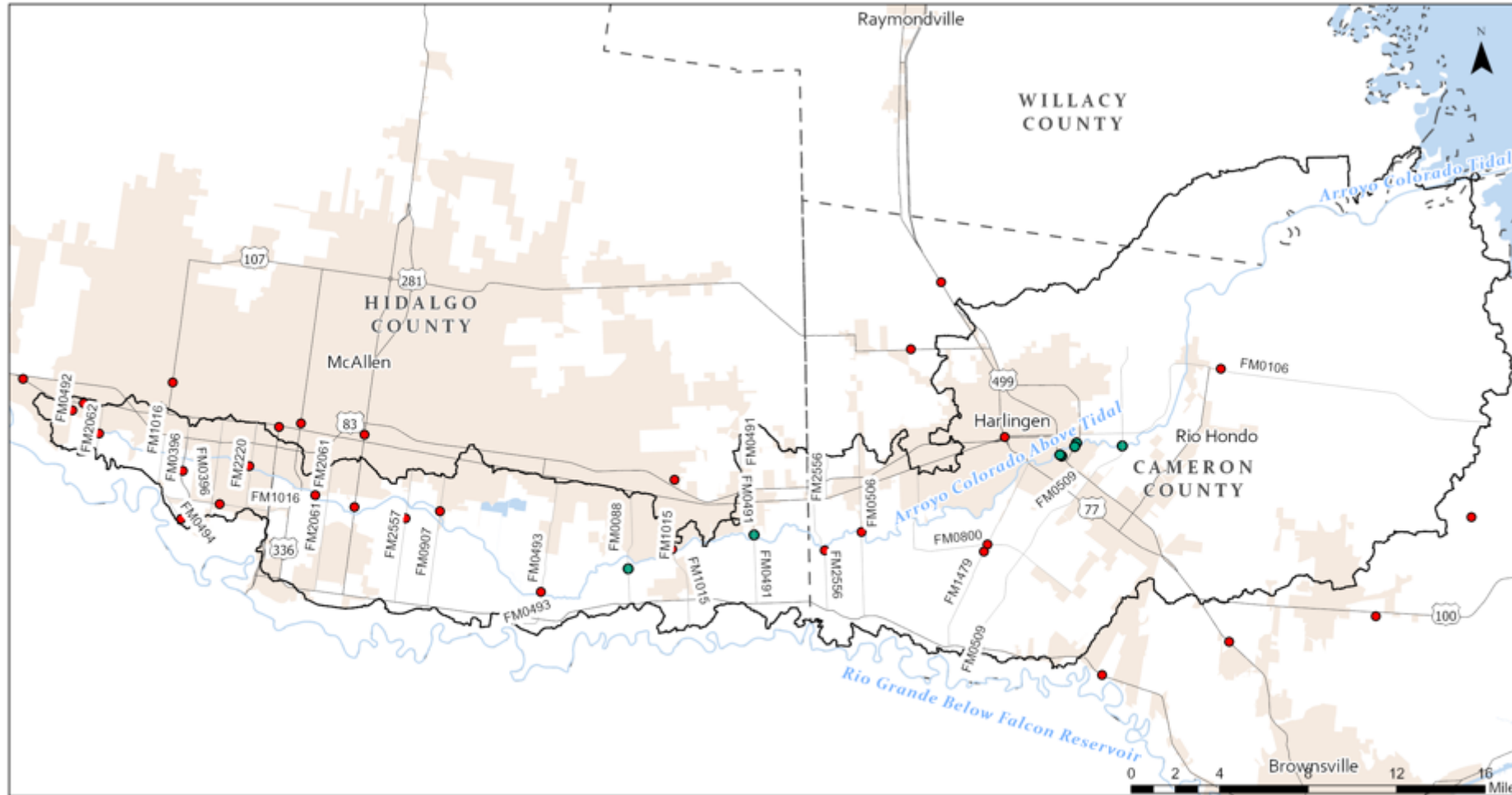
Inventory Arroyo

Inv_note06

- OSSF w/o permit record
- OSSF with permit record, in SA (avail)
- OSSF with permit record, outside SA
- Arroyo Colorado
- Arroyo Colorado Buffer
- Sewer Area
- County Boundary
- Arroyo Colorado Watershed Boundary

OSSF Type	Cameron Co	Hidalgo Co
Total #	14,683	19,505
No Permit	10,882	19,278
Permit - in SA	3,259	167
Permit – outside SA	542	60

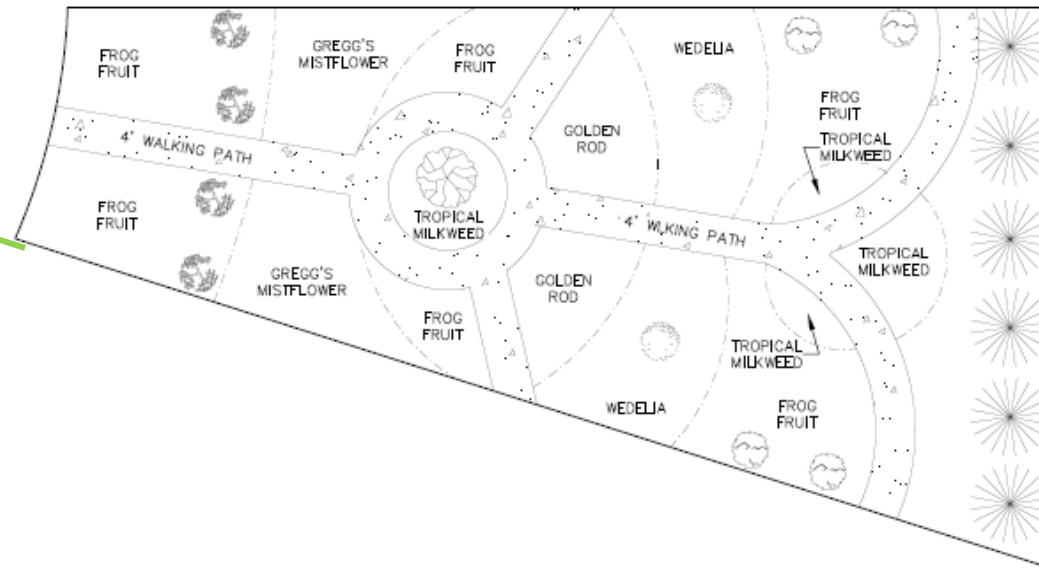
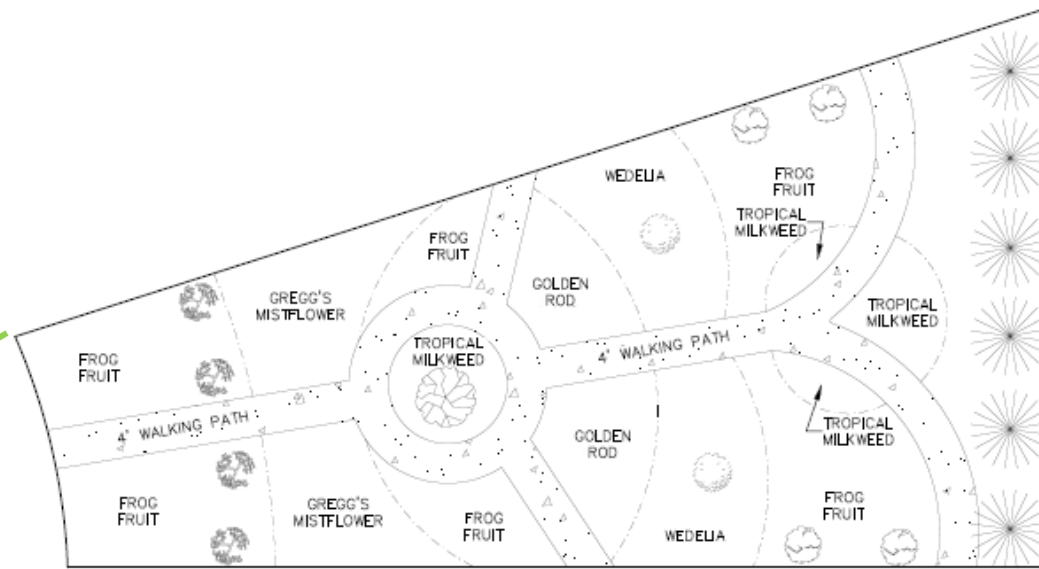
Watershed Signage



- | | | | |
|--------------------|---------|-----------------------|------------------------------------|
| Watershed Boundary | Streams | Lakes | Road signs currently in place : NO |
| County Boundaries | Roads | US Census Urban Areas | Currently in place : YES |

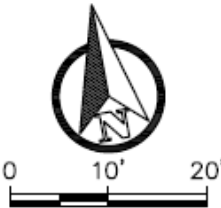
- Coordinating with TxDOT
- Determining permit needs
 - Installation logistics
 - Updated locations

Rio Hondo Middle School Stormwater BMP



LEGEND

- SKELETON DAISY
- TURK'S CAP
- PATA X DE CHIVO
- POTATO X TREE
- FIDDLE WOOD
- CRUSH STONE



SCALE: 1"=20'
BASIS OF BEARINGS:
TEXAS STATE PLANE
COORDINATE SYSTEM
SOUTH ZONE 4205

Stormwater BMP Establishment



Rio Hondo Stormwater BMP Activities

- Develop and install signage: Plant ID and Stormwater Management
- Create learning content associated with BMP
 - Work with teachers and ESC 1 to ensure content meets grade appropriate TEKS
 - Habitat and organism ecology
 - Succession
 - Biodiversity
 - Natural disasters
 - Human impacts
 - Nonpoint Source Pollution
- Texas Stream Team Training
 - Science Teachers and select group of science students
 - Education on watersheds, water quality, stream systems, ecological implications
 - Instruction on monitoring techniques and methods
 - Empowers students to conduct their own research on local waterbodies and promote environmental stewardship
 - Working to establish an after school science club

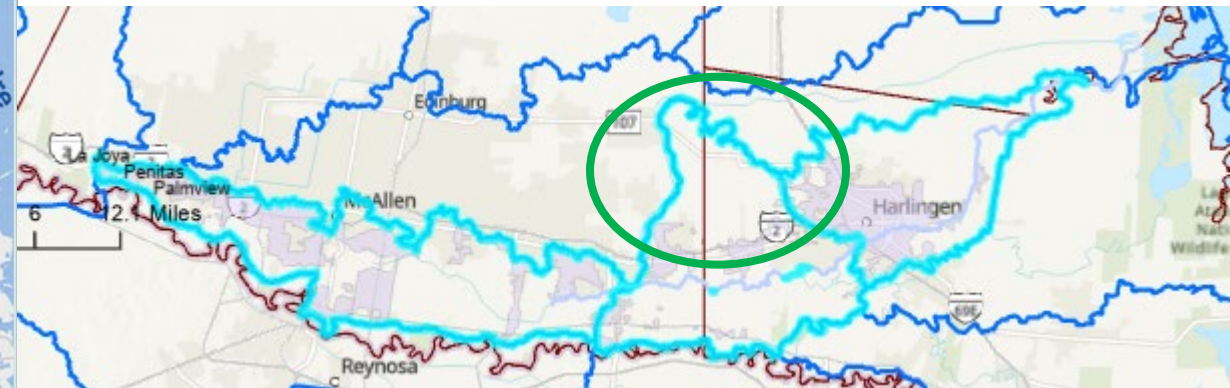
Future WPP Implementation Activities

- Additional Clean Water Act Section 319h funding from TCEQ is on the way
- Approximate start time is October 2025
- Will continue implementing items from the 2017 WPP
- Reinvigorating WPP Implementation is a main goal
 - Identifying evolving stakeholder/watershed needs

**Funding level subject to change and availability

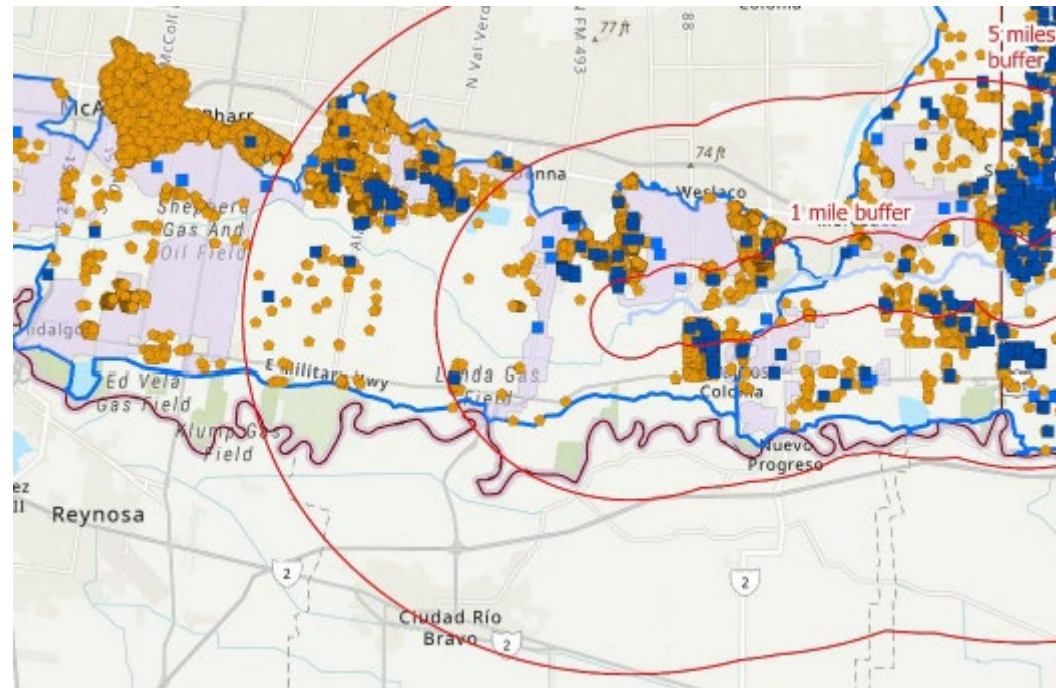
Watershed Boundary Update

- 2017 WPP Update highlighted the need to update the boundary
- Drainage and irrigation networks complicate hydrology
- Better data now exists – LIDAR elevation
- Will seek input from cities, drainage, irrigation districts, etc.
- Publish updated watershed boundary maps and GIS layer



Continue OSSF Database Development

- Continue adding OSSFs from Cameron and Hidalgo counties
 - Maintain contact with County DRs for new permits
- Update maps and ID priority areas for OSSF education & outreach



Stakeholder Facilitation & Coordination

- Continue seeking funding to implement WPP
- Maintain watershed website
- Facilitate steering committee and work group meetings
- Keep stakeholder list up to date
- Coordinate with existing groups in watershed
- Develop and deliver annual newsletter
- Information dissemination
- WPP Implementation Progress Report

Contact Info

Lucas Gregory

LFGregory@ag.tamu.edu

979-314-2361

<https://arroyocolorado.org/>



Sign up for the mailing list!



Update to the
Arroyo Colorado
Watershed Protection Plan